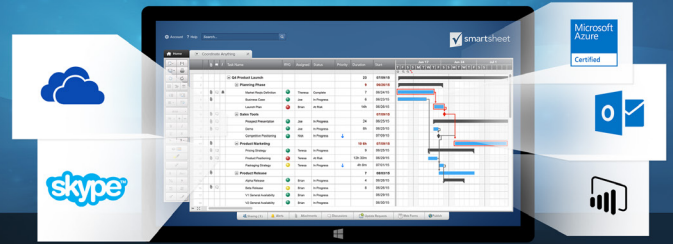
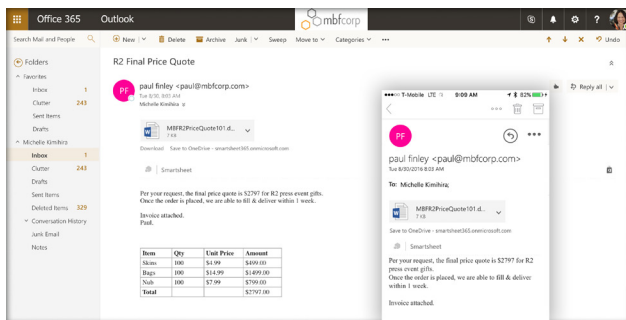


Work Smarter

smartsheet + Microsoft



Smartsheet is a powerful work management and collaboration tool integrated with Microsoft applications to streamline processes, improve compliance, and enable better decision making. Use it to collaborate with others, track progress on projects, automate processes, and better structure your work.

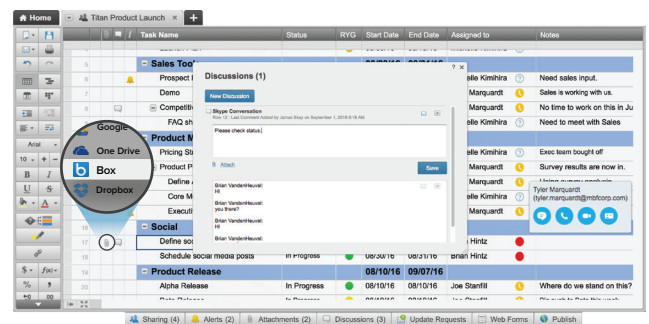


Work in Context

Smartsheet's award-winning app for Outlook helps you keep track of key details in email, in the context of the project or task that you are collaborating on. Quickly and easily transfer the contents of your work emails, including text and attachments, to Smartsheet on your desktop or using Outlook Mobile.

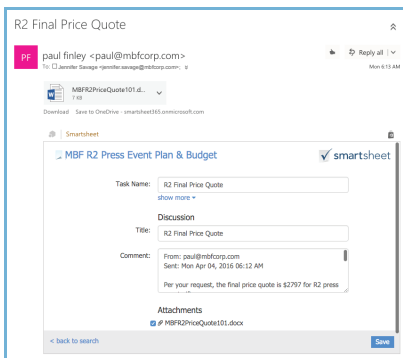
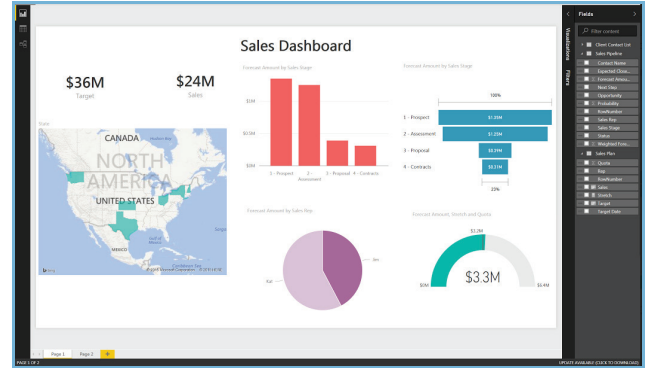
Collaboration Made Easy

Collaborate on work by attaching OneDrive content directly to specific projects or tasks in Smartsheet and sending relevant rows with that content attached. Collaborate with internal and external stakeholders using Skype video calls*, Comments, and granular sharing permissions in Smartsheet. This real-time collaboration helps streamline communication and drives productivity.



Improve Visibility

Gain meaningful insights for better decision making with Smartsheet desktop connector for Power BI. Through interactive dashboards, you can combine data in Smartsheet with other data sources to create more valuable and innovative visualizations, and increase the visibility and transparency of your work.



Automate Workflow

Create automated workflows between Smartsheet and your favorite apps and services using Microsoft Flow. Receive notifications, synchronize files, collect data, and more to create one location for project and process details.

Single Sign-on

Users can sign on to Smartsheet with Azure Active Directory to provide seamless, secure access to your projects and tasks from anywhere, on any device.



More Information

Learn more: smartsheet.com/microsoft

Check out the Smartsheet listing at store.office.com for a free 30-day trial

Smartsheet is redefining the way that individuals, teams, and organizations deliver great work. Our collaborative work management platform is trusted by over 8 million registered users in 80,000 customers across more than 190 countries. Customers like Cisco, Groupon, Salesforce, the GSA, Google, and over half of the Fortune 500 use Smartsheet across a range of departments, every day. Want to know how we help individuals and teams make smarter decisions that drive business performance? Visit www.smartsheet.com for more details.

*Skype video calls integration with Smartsheet scheduled for release in December 2016. Subject to change.

Contact Us:

Follow Us: