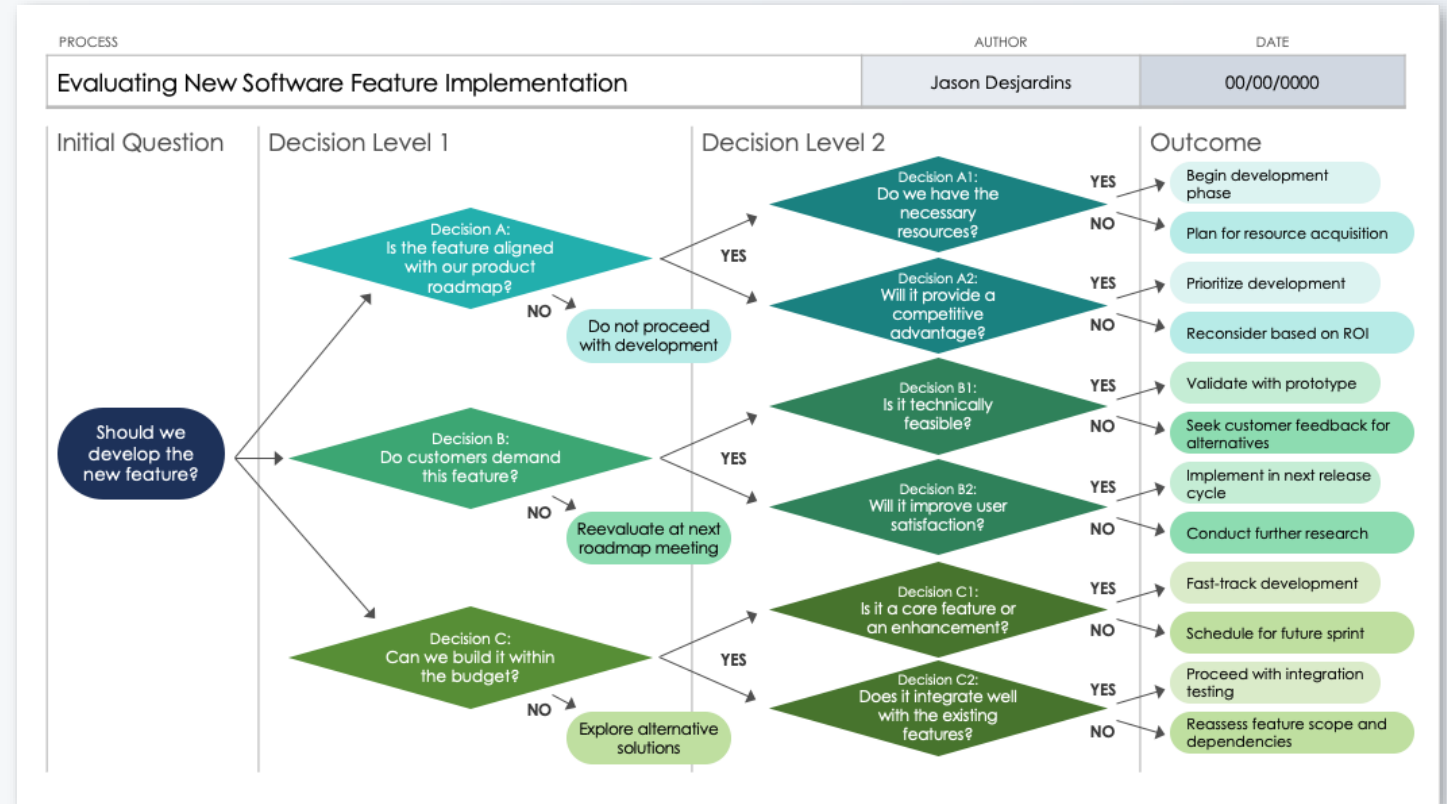


Timeline Gantt Chart Decision Tree

When to Use This Template: Use this template whenever your team needs to make a critical decision. It is particularly useful in strategic planning sessions, risk management meetings, or any situation where you need to evaluate the consequences of different choices, so you can guide stakeholders toward informed decisions.

Notable Template Features: This template includes decision points and branching paths so that you can explore various scenarios. The layout helps you visualize and analyze the impact of each potential choice.



Starting
QuestionDecision
Point

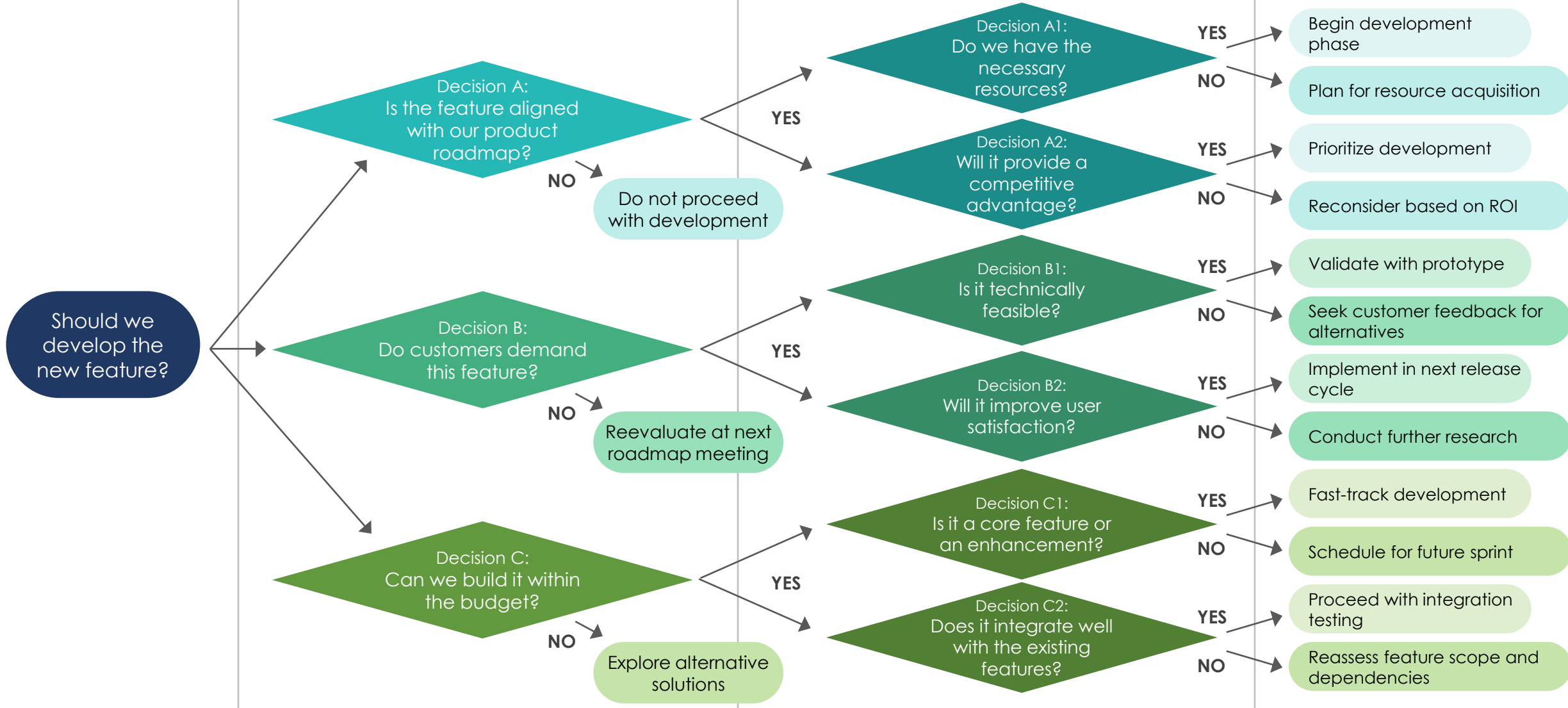
Process Step

Initial Question

Decision Level 1

Decision Level 2

Outcome





DISCLAIMER

Any articles, templates, or information provided by Smartsheet on the website are for reference only. While we strive to keep the information up to date and correct, we make no representations or warranties of any kind, express or implied, about the completeness, accuracy, reliability, suitability, or availability with respect to the website or the information, articles, templates, or related graphics contained on the website. Any reliance you place on such information is therefore strictly at your own risk.